

SECTION 10210
METAL WALL LOUVERS

PART 1 - GENERAL

1.01 WORK INCLUDED

- A. Louvers and frames with bird and insect screening and any blank out sheeting required for the application.
- B. Refer to Drawings.
- C.

1.02 SUBMITTALS

- A. Submit shop drawings and product data under provisions of Section 01300.
- B. Indicate on shop drawings, layout, elevations, dimensions, and tolerances; head, jamb, and sill details; blade configuration; screening; and frames.
- C. Provide product data on preassembled louvers describing design characteristics, maximum recommended air velocity, free area, materials, and finishes.
- D. Submit samples under provisions of Section 01300.
- E. Submit two samples 2 x 4 inch in size illustrating finish and color of exterior and interior
- F. Submit manufacturer's installation instructions under provisions of Section 01300.

1.03 COORDINATION

- A. Coordinate work of this Section with installation of masonry flashings.
- B. Coordinate work of this Section with mechanical ductwork.

PART 2 - PRODUCTS

2.01 ACCEPTABLE Manufacturers

- A. Airolite, Type CB609 weatherproof, storm resistant extruded aluminum louvers (4" depth) with drainable blades
- B. Equal products by Construction Specialties, Ruskin are approved for bidding.
- C. Substitutions: Section 01600 - Material and Equipment and Instructions to Bidders.

2.02 MATERIALS

- A. Aluminum: Aluminum alloy 6063-T52 extruded shape. Louvers shall be finished after assembly baked enamel finish meeting AAMA2603.

2.03 ACCESSORIES

- A. Bird Screen: Interwoven wire mesh of aluminum, 0.063 inch diameter wire, 1/2 inch open

weave, square design.

B. Insect Screen: aluminum mesh, set in aluminum frame.

C. Sealants: Type specified in Section 07900.

2.04 FABRICATION

A. Louver Size: As indicated on drawings.

B. Louver Blade: Drainable Sloped at 49 to 63 Degree; horizontal blades with concealed vertical mullions; minimum material thickness of .081" (2mm). Louvers to be designed to minimize damage from wind driven rain.

C. Louver Frame: Channel shape, welded corner joints, material thickness same as blades.

D. Where metal housing is provided at triangular roof louvers, frame and construct to meet IBC Wind Loading for the area.

2.05 FINISHES

A. Exterior and interior aluminum surfaces, screens: Factory baked enamel color **As selected by Architect.**

B. Interior Aluminum Surfaces, Screens, and Blank Out Sheeting: clear aluminum.

PART 3 - EXECUTION

3.01 INSPECTION

A. Verify that prepared openings and flashings are ready to receive work and opening dimensions are as indicated on drawings.

B. Beginning of installation means acceptance of existing conditions.

3.02 INSTALLATION

A. Install louver assembly in accordance with manufacturer's instructions.

B. Install louvers level and plumb.

C. Secure louvers in opening framing with concealed fasteners.

D. Install flashings and align louver assembly to ensure moisture shed from flashings and diversion of moisture to exterior.

E. Install bird and insect screening to exterior and interior of louver.

F. Install insect screens to intake louvers. Install bird screens to exhaust louvers.

G. Install perimeter sealant and backing rod in accordance with Section 07900.

END OF SECTION

SECTION 10350
FLAGPOLES

PART 1 - GENERAL

1.01 DESCRIPTION

- A. Work Included: Provide flagpoles where shown on the Drawings, as specified herein, and as needed for a complete and proper installation.
- B. Related Work: Documents affecting work of this Section include, but are not necessarily limited to, General Conditions, Supplementary Conditions, and Sections in Division 1 of these Specifications.

1.02 QUALITY ASSURANCE

- A. Use adequate numbers of skilled workmen who are thoroughly trained and experience in the necessary crafts and who are completely familiar with the specified requirements and the methods needed for proper performance of the work of this Section.

1.03 SUBMITTALS

- A. Comply with pertinent provisions of Section 01300.
- B. Product data: Within 45 calendar days after the Contractor has received the Owner's Notice to Proceed, submit:
 - 1. Materials list of items proposed to be provided under this Section;
 - 2. Manufacturer's specifications and other data needed to prove compliance with the specified requirements;
 - 3. Shop Drawings showing general layout, dimensions, base design and its connection to foundation, anchoring and support system, and grounding system.
 - 4. Design, calculations, drawings, and other data needed to secure approval of foundation from governmental agencies having jurisdiction.
 - 5. Manufacturers' recommended installation procedures which, when approved by the Architect, will become the basis for accepting or rejecting actual installation procedures used on the Work.

1.04 PRODUCT HANDLING

- A. Comply with pertinent provisions of Section 01600.

PART 2 - PRODUCTS

2.01 FLAGPOLE MANUFACTURERS

- A. For the purpose of establishing quality, type and design, products manufactured by Colonial Flag, Model # IWM60F23-AA, have been specified. ColonialFlag.com phone: 800-782-0500.
- B. Equal products by the following are approved for bidding:
 - 1. American Flagpole Division of Kearney-National, Inc.
 - 2. Acme Flagpoles Company Division of Lingo, Inc.
- C. Substitutions: Per Instructions to Bidders and Section 01600.

2.01 FLAGPOLES

- A. Provide flagpoles, accessories, bases, and anchorage devices as complete units furnished by one manufacturer, and with the following attributes:

1. Overall dimensions:
 - a. 60 feet high exposed, with 12 inch butt and 4 inch top diameter, wall thickness of .250 inch.
 2. Design:
 - a. Uniform, straight line, cone tapered sections above cylindrical butt sections, manufactured from seamless aluminum tube of 6063-T6 alloy, heat treated and age hardened.
 - b. Taper 52 feet 4 inches.
 - c. Provide internal splicing, self-aligning sleeve of same material as flagpole for snug fitting, precision field joints.
 3. Finish:
 - a. Below ground: Shop coat of asphaltic paint inside and outside.
 - b. Exposed aluminum surfaces: Directional satin ground, 50 grit.
- B. Fittings and accessories:
1. Provide flash collar of spun aluminum.
 2. Provide finial gold anodized ball 14 gage spun aluminum on each flagpole.
 3. Operation: Manually operated internal winch with removeable handle and flush access door with compression lock.
 4. See attached detail at end of Section.
- C. Provide ground set foundation assembly and lightning protection system as standard with the approved manufacturer and as approved by governmental agencies having jurisdiction.

2.02 FOUNDATIONS

- A. Provide the services of an engineer licensed in the State of Louisiana to perform such work at the location of the Work, and design a foundation for each flagpole to comply with pertinent requirements of governmental agencies having jurisdiction.
- B. Provide such drawings and calculations as are required, and make necessary arrangements and pay such costs as are involved, and secure approvals of governmental agencies having jurisdiction.
- C. Provide labor and materials and perform such services as are needed and construct the foundations in the locations shown on the Drawings and as approved by the Architect and the governmental agencies having jurisdiction.

2.03 FLAGS

- A. Furnish and install one 15 ft. x 25 ft. Heavy Duty 100% 2-ply , spun woven Polyester American Flag.

PART 3 - EXECUTION

3.01 SURFACE CONDITIONS

- A. Examine the areas and conditions under which work of this Section will be performed. Correct conditions detrimental to timely and proper completion of the Work. Do not proceed until unsatisfactory conditions are corrected.

3.02 INSTALLATION

- A. Install the flagpoles and accessories in strict accordance with the manufacturers' recommendations as approved by the Architect, aligning plumb to a vertical tolerance of one in 1000, and adjusting operating components for optimum smoothness of operation.

END OF SECTION

Internal Winch - Ground Set

Model # IWM60F23-AA

Customer Name:

Rep Name:

Architect Name:

Project:

Location:

PO Number:

Quantity:

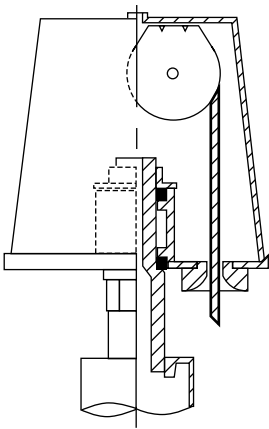
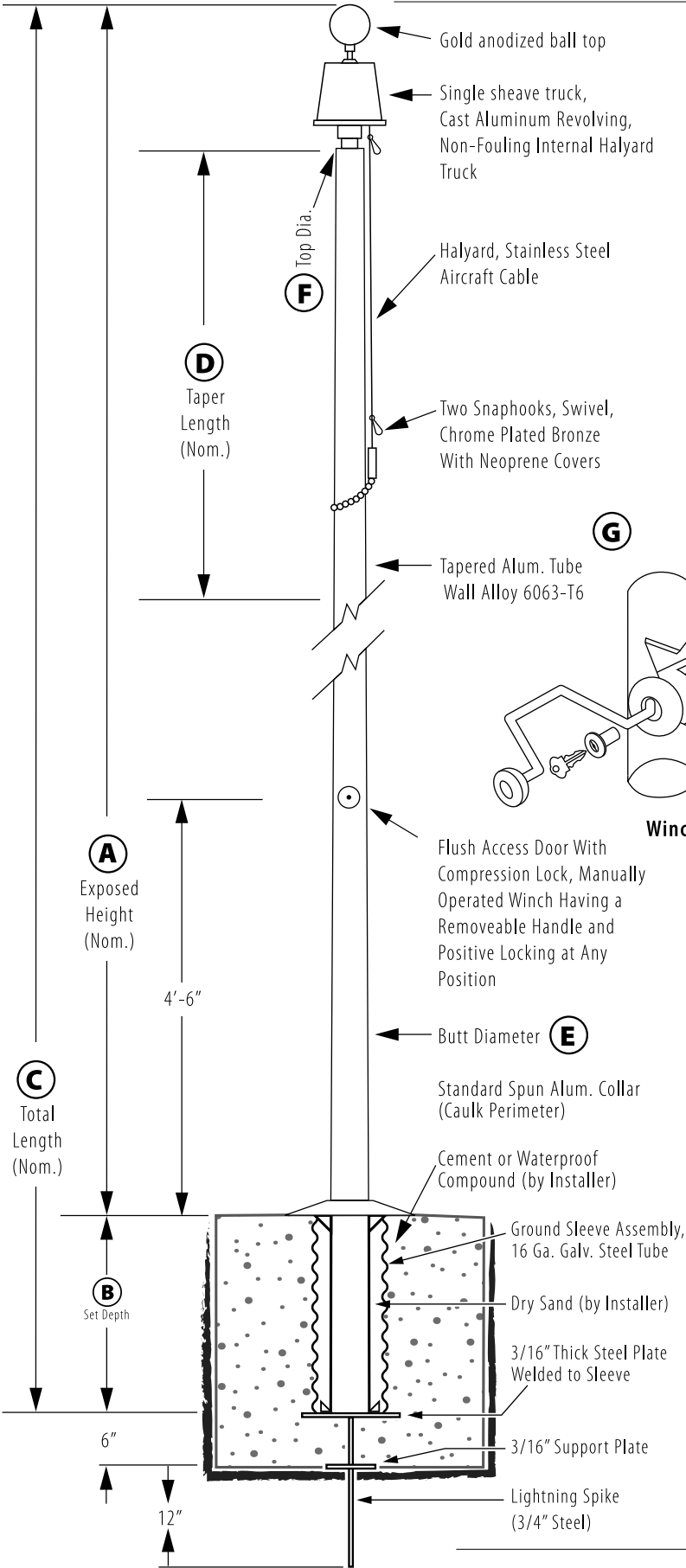
Notes:

| | |
|--------------------|--------------|
| A - Exposed Height | 60 ft. |
| B - Set Depth | 6 ft. |
| C - Total Length | 66 ft. |
| D - Taper | 52 ft. 4 in. |
| E - Butt Diameter | 12 in. |
| F - Top Diameter | 4 in. |
| G - Wall Thickness | 0.250 in. |

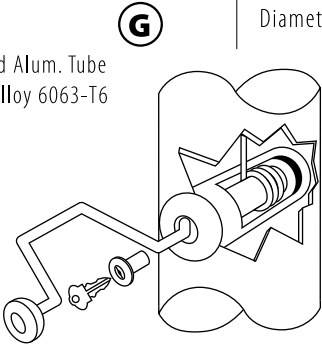
Finish:
Anodized, Clear

Piece: 3

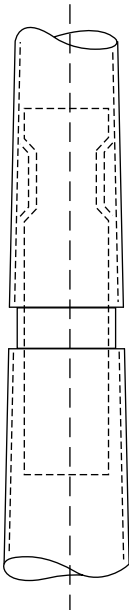
Accessories:
Gold anodized ball top,
standard collar



Revolving Non-Fouling Internal Halyard Truck
Cast Aluminum Body, 26 Stainless Steel Ball Bearings, 2-1/2" Diameter Plate Steel Sheave.



Winch Detail



All shafts with overall length of 33' or more are shipped in **two sections**

1-1/2" maximum shop gap allowed for field fitting (ram for tight joint).

Joint occurs on 2 or more piece flagpoles.

SECTION 10520
FIRE EXTINGUISHERS AND CABINETS

PART 1 - GENERAL

1.01 DESCRIPTION

- A. Work included: Provide fire extinguishers and cabinets where shown on the Drawings, as specified herein, and as needed for a complete and proper installation.
- B. Provide (one) 10 lb ABC type extinguisher on wall hook at all mechanical and equipment rooms
- C. Provide (one) 5 lb ABC type in each fire extinguisher cabinet unless noted otherwise.
- C. Related work:
 - 1. Documents affecting work of this Section include, but are not necessarily limited to, General Conditions, Supplementary Conditions, and Sections in Division 1 of these Specifications.

1.02 QUALITY ASSURANCE

- A. Use adequate numbers of skilled workmen who are thoroughly trained and experienced in the necessary crafts and who are completely familiar with the specified requirements and the methods needed for proper performance of the work of this Section.

1.03 SUBMITTALS

- A. Comply with pertinent provisions of Section 01300.
- B. Product data: Within 35 calendar days after the Contractor has received the Owner's Notice to Proceed, submit:
 - 1. Materials list of items proposed to be provided under this Section;
 - 2. Manufacturer's specifications and other data needed to prove compliance with the specified requirements;
 - 3. Dimensioned drawings as needed to depict the space required for these items, and their interface with the work of other trades.
 - 4. Manufacturer's recommended installation procedures which, when approved by the Architect/Engineer, will become the basis for accepting or rejecting actual installation procedures used on the Work.

1.04 PRODUCT HANDLING

- A. Comply with pertinent provisions of Section 01600.

PART 2 - PRODUCTS

2.01 ACCEPTABLE MANUFACTURERS

- A. J. L. Industries
- B. Larsen's Fire Protection and Safety Equipment
- C. Muckle - Manufacturing Division of Technilo, Inc.
- D. Amerex, Corp.
- E. Kidde

- F. Substitutions: Under provisions of Section 01600 and Instructions to Bidders.

2.02 DESCRIPTION

- A. For the purpose of clarity and establishing type and quality items specified by manufacturer's model numbers and names below are based on products manufactured by J. L. Industries.
- B. CABINETS
 - 1. Model - Academy with flat trim - Recessed.
 - 2. Door - Contemporary "V" style.
 - 3. Glazing - Clear double strength
 - 4. Color - Clear Anodized Aluminum.
- C. FIRE EXTINGUISHERS
 - 1. **Cosmic 5E (5 lbs ABC Type)** One in each fire extinguisher cabinet unless noted otherwise.
 - 2. Cosmic 10E (10 lbs ABC Type)
 - 3. Type K (10 lb) Only as indicated on drawings.

PART 3 - EXECUTION

3.01 SURFACE CONDITIONS

- A. Examine the areas and conditions under which work of this Section will be performed. Correct conditions detrimental to timely and proper completion of the Work. Do not proceed until unsatisfactory conditions are corrected.

3.02 INSTALLATION

- A. Coordinate as required with other trades to assure proper and adequate provision in the work of those trades for interface with the work of this Section.
- B. Install the work of this Section in strict accordance with the original design, the approved Shop Drawings, pertinent requirements of governmental agencies having jurisdiction, and the manufacturer's recommended installation procedures as approved by the Architect/Engineer, anchoring all components firmly into position for long life under hard use.
- C. Furnish and install wood blocking in partitions as recommended by manufacturer and required for complete installation.

END OF SECTION

SECTION 10800
TOILET ROOM ACCESSORIES

PART 1 - GENERAL

DESCRIPTION

- A. Work included: Provide toilet room accessories where indicated on the Drawings, as specified herein, and as needed for a complete and proper installation. Coordinate the installation of concealed anchor plates with metal studs, RE: Section 09111.
- B. Related work:
 - 1. Documents affecting work of this Section include, but are not necessarily limited to, General Conditions, Supplementary Conditions, and Sections in Division 1 of these Specifications.
 - 2. Coordinate installation of concealed anchor plates with metal studs.

1.02 QUALITY ASSURANCE

- A. Use adequate numbers of skilled workmen who are thoroughly trained and experienced in the necessary crafts and who are completely familiar with the specified requirements and the methods needed for proper performance of the work of this Section.

1.03 SUBMITTALS

- A. Comply with pertinent provisions of Section 01300.
- B. Product data: Within 35 calendar days after the Contractor has received the Owner's Notice to Proceed, submit:
 - 1. Materials list of items proposed to be provided under this Section;
 - 2. Manufacturer's specifications and other data needed to prove compliance with the specified requirements;
 - 3. Manufacturer's data clearly defining the required support and other details of installation to enable proper interface with the work of other trades.
 - 4. Manufacturer's recommended installation procedures which, when approved by the Architect/Engineer, will become the basis for accepting or rejecting actual installation procedures used on the Work.
 - 5. Provide 6" x 6" sample of opaque glass for shower door and one shower door hinge sample after Architect selects finish.

1.04 PRODUCT HANDLING

- A. Comply with pertinent provisions of Section 1600.

PART 2 - PRODUCTS

2.01 ACCEPTABLE MANUFACTURERS

- A. Described below.
- B. Substitutions: Under provisions of Section 01600 and Instructions to Bidders.

2.02 MATERIALS

- A. Anchors and fasteners:
 - 1. Provide anchors and fasteners capable of developing a retaining force commensurate with the strength of the accessory to be mounted, and well suited for use with the supporting construction.
 - 2. Where exposed fasteners are permitted, provide oval head fasteners with finish matching the accessory.
- B. Provide stainless steel with satin finish on all items of this Section.
- C. Provide all items from a single manufacturer.
- D. Where indicated on the Drawings or specified below provide the following items or equal, as specified above:
 - 1. Mirror: Size 24" x 36: unless indicated otherwise on plans equal to Bobrick #B-290 Series.
 - 2. NOT USED.
 - 3. Toilet Tissue Dispenser - B-4388 Recessed by Bobrick: provide one at each toilet.
 - 4. Robe Hooks: Located at door of **each single toilet room, each dressing room, and each patient toilet room door** shown on Drawings. Bobrick B-7671.
 - 5. Grab Bars with concealed mounting as shown on drawings, Bobrick #B-550.99, Bradley Model 8932. Concealed steel anchor plates shall be provided for grab bar equal to 256 Series Anchor Plates as manufactured by Bobrick.
 - 6. Paper Towel Dispenser-Toilet Rooms: Bobrick B-359033 TrimLineSeries-Recessed. Provide one at each toilet room handwash sink.
 - 7. Paper Towel Dispenser-: Bobrick B-4262 ConturaSeries- Surface mounted. Provide one at each at all handwash sinks other than toilet rooms.
 - 8. Soap Dispensers: Ecolab, Bacti-foam 750ml model #EL61806499, plastic container with pumping device: one per lavatory or sink.

2.03 OTHER MATERIALS

- A. Provide other materials, not specifically described but required for a complete and proper installation, as selected by the Contractor subject to the approval of the Architect/Engineer.

PART 3 - EXECUTION

3.01 SURFACE CONDITIONS

- A. Examine the areas and conditions under which work of this Section will be performed. Correct conditions detrimental to timely and proper completion of the Work. Do not proceed until unsatisfactory conditions are corrected.

3.02 INSTALLATION

- A. Coordinate as required with other trades to assure proper and adequate provision in the work of those trades for interface with the work of this Section.
- B. Install each item in its proper location, firmly anchored into position, level and plumb, and in accordance with the manufacturer's recommendations.

END OF SECTION